

RU / RS

Revolving Warning Light



Bulb



ø82

IP55 With SZ-210A



◀With optional rubber gasket.



◀With optional rubber gasket.

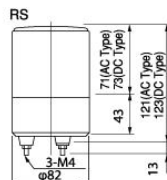
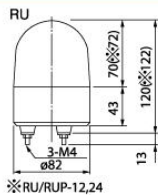


Optional Rubber Gasket SZ-210A

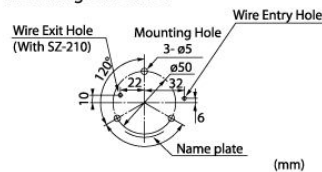
Compact Revolving Warning Light perfectly designed for small devices.

- Integral Rotating Parabolic Reflector: For enhanced visibility from a distance.
- Extended Bulb Life: Vibration-resistant automobile bulb.
- Installation: Indoors—upright, inverted, sideways; Outdoors—upright only.
- Main Body: Impact- and heat-resistant ABS resin.
- Dome: Superior impact- and heat-resistant polycarbonate resin.
- CE Compliance: DC 12/24V type only.
- Available Colors: Red, Amber, Green, Blue.
- Option: RUP furnished with pole and bracket.

Dimensions



Mounting Dimension



RU/RS type

Model	Rated Voltage	Current	Flashes per Minute	Bulb	Mass			
					No.	RU	RUP	
RU/RUP/RU/RSP-12	DC12V	0.5A	120	12V6W	18	0.4Kg	0.8Kg	
RU/RUP/RU/RSP-24	DC24V	0.3A		24V6W	19			
RU/RUP/RU/RSP-100	AC100V	0.1A		12V6W	18	0.6Kg	1.0Kg	
RU/RUP/RU/RSP-220	AC220V	0.05A		24V6W	19	0.4Kg	0.8Kg	
○RU/RUP/RU/RSP-24C	AC24V	0.3A						
Bulb—G14 BA9S								○ Custom order